



# METERING SYSTEM



**ULEE INTERNATIONAL (H.K.) LIMITED GROUP**  
RM907 JMB092 2ND TUCK COMM CTR 177-183 WING LOK ST HK

ULEE LIMITED #730914109 000 04 88 9  
Phone: +86 13 387 811 403 - Fax: +86 57 487 828 414



# DDSD285 (P)

## Single Phase Meter

**DDSD285 (P) Single Phase Meter** is a residential meter. The meter measures and records active energy, active maximum demand and real time values of the power grid with TOU features. Data and parameters are displayed on LCD and can be read out through optical port or RS485 port. The user's power consumption can be checked by analyzing historical data and load profile. Event log of the meter helps determine the meter status as well as power grid conditions.

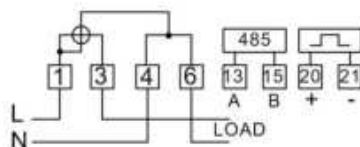


# DDSD285 (P) Single Phase Meter

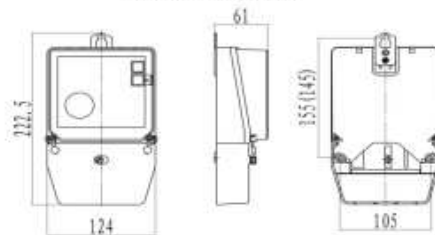
## Specification

Item	Sub-item	Parameter	
Basic	Meter Type	1 Phase 2 Wire	
	Meter Standard	IEC62052-11, IEC62053-21	
	Active Accuracy	Class 1.0 (IEC62053-21)	
	Rated Voltage (Un)	220V, 230V, 240V	
	Operating Voltage Range	0.8Un~1.2Un	
	Operating Frequency	50Hz or 60Hz	
	Basic Current (Ib)	5A, 10A, 15A, 20A	
	Maximum Current (Imax)	60A, 100A (Direct Connection) 5A, 10A, 15A, 20A	
	Starting Current	0.004Ib	
	Pulse Constant	1600 imp/kWh (Imax = 80A)	
	Power Consumption	Current Circuit: $\leq 0.5VA$ (Ib=5A) Voltage Circuit: $\leq 1W/10VA$	
	Operating Temperature	-40°C ~ +70°C	
	Storage Temperature	-40°C ~ +85°C	
Performance	AC Voltage of Insulation	4kV, 50Hz, 1 minute	
	Impulse Voltage of Insulation	6kV	
	Immunity to Fast Transient Burst	4kV	
	Surge Immunity	4kV	
	Immunity to Short-time Over-current	30 Imax	
Communication	Local Comm. Port1	Optical Port	
	Local Comm. Port2	RS 485	
	Local Comm. Protocol	IEC62056-21 C	
LED & LCD Display	LED	1 Active Pulse 1 Alarm LED (Current reverse)	
	LCD Display Digits (integer + decimal)	Energy: default 6+2      History Energy: 7+1	
TOU	TOU	-4 tariff -10 time interval -8 day profiles table -8 week profile table -6 seasons -special holidays & fixed holidays	
		RTC	$\leq 0.5$ s/day (at 23°C)
		DST	Support
		Battery Life	10years
Load Profile	Load Profile	Up to 9 channels	
Billing	Billing Data (Energy data)	Save 12 times billing data	
	Billing Data (MD Data)	Save 12 times billing data	
Event	Anti-tamper	Magnetic detection, meter cover open, terminal cover open, Current reverse.	
	Event Records	11 kinds of events	
Mechanism	Terminal Box	DIN Standard	
	Enclosure Protection	Ip54 (indoor)	
	Seal	1 Meter terminal cover seal 3 Meter cover seal	
	Meter Case material	Polycarbonate	
	Dimensions (L x W x H)	222.5mmx124mmx61mm	
	Weight	0.6kg	

### Connection



### Dimensions





# DDSD285(S)

## Single Phase Meter

**DDSD285(S) Single Phase Meter** is a residential meter. It is MID certified. The meter measures and records active energy, active maximum demand and real time values of the power grid with TOU features. It has anti-tampering features. The battery is replaceable. Data and parameters are displayed on LCD and can be read out through optical port or RS485 port. The user's power consumption can be checked by analyzing historical data and load profile. Event log of the meter helps determine the meter status as well as power grid conditions.

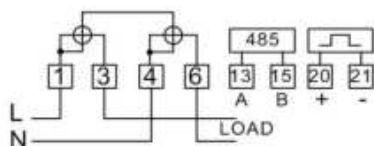


# DDSD285(S) Single Phase Meter

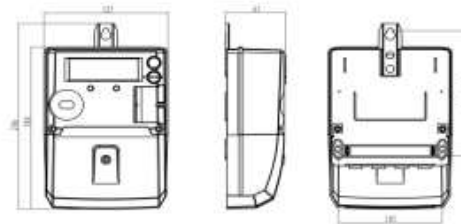
## Specification

Item	Sub-Item	Parameter
Basic	Meter Type	1 Phase 2 Wire
	Meter Standard	IEC62052-11, IEC62053-21
	Active Accuracy	Class 1.0 (IEC62053-21)
	Rated Voltage (Un)	220V, 230V, 240V
	Operating Voltage Range	0.7Un~1.15Un
	Operating Frequency	50Hz or 60Hz
	Basic Current (Ib)	5A, 10A, 15A, 20A
	Maximum Current (Imax)	40A, 60A, 80A, 100A (Direct Connection)
	Starting Current	0.004Ib
	Pulse Constant	2000 imp/kWh (Imax = 40A)
	Power Consumption	Current Circuit: $\leq 0.5VA$ (Ib=5A) Voltage Circuit: $\leq 1W/10VA$
	Operating Temperature	-25°C ~ +55°C
	Storage Temperature	-40°C ~ +70°C
Performance	AC Voltage of Insulation	4kV, 50Hz, 1 minute
	Impulse Voltage of Insulation	6kV
	Immunity to Fast Transient Burst	4kV
	Surge Immunity	4kV
	Immunity to Short-time Over-current	30 Imax
Communication	Local Comm. Port1	Optical Port
	Local Comm. Port2	RS 485
	Local Comm. Protocol	IEC62056-21 C
LED & LCD Display	LED	1 Active Pulse 1 Alarm LED
	LCD Display Digits (integer + decimal)	Energy: default 6+2      Option: 6+1
TOU	TOU	-4 tariff -12time interval -4 day profiles table -4 seasons
	RTC	$\leq 0.5$ s/day (at 23°C)
	DST	Support
	Battery Life	At least 2 years in case of any power failure.
Load Profile	Load Profile	Up to 9 channels
Billing	Billing Data (Energy & Active MD)	Save recent 12 times billing data.
Event	Event Records	8 kinds of events
	Terminal Box	85 Standard (Hole Size: 8.5mm <sup>2</sup> )
Mechanism	Enclosure Protection	IP 54
	Seal	1 for terminal cover 2 for meter cover
	Case Material	Polycarbonate
	Against mechanical stroke and shak	Comply to IEC62052-11 Clause 5.2.2.1, 5.2.2.2 & 5.2.2.3
	Dimensions (L x W x H)	180mm x 125mm x 61mm
	Weight	0.6kg

## Connection



## Dimensions







# DDSY283SR

## Single Phase AMM Meter

**DDSY283SR Single Phase AMM Meter** is designed based on Holley-patented technology. It is a new generation of smart meter using state-of-the-art IC technology, international PRIME/G3 PLC technology and open communication protocols compliant with international standards. With the features of power data metering, multi-communication interfaces, tariff control, load profile and remote control, the meter is able to achieve automatic network registration, network self-repair and real time communication, and is an ideal product satisfying complicated applications of smart grid.

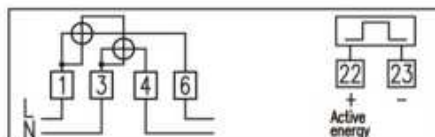


# DDSY283SR Single Phase AMM Meter

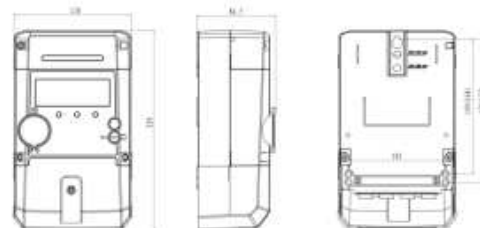
## Specification

Item	Parameter
Accuracy (kWh)	Class 1 (IEC62053-21)
Basic Current (Ib)	10A
Maximum Current (Imax)	80A
Minimum Current	0.05Ib
Starting Current	0.004Ib (Direct Connection)
Rated Voltage (Un)	230V
Operating Voltage Range	0.8Un~1.2Un
Operating Frequency	50Hz
Communication Interface	Local: Optical Port Remote: GPRS or PLC (exchangeable)
Communication Protocol	Local: IEC62056-21 E mode(DLMS) Remote: DLMS TCP/IP
RTC	≤0.5s/day (at 23°C)
Backup Battery	Replaceable; Long life Li-SOCI2 battery
Pulse Constant	1000 imp/kWh
Power Consumption	Current circuit ≤ 0.5VA Voltage circuit ≤ 1.0W/10VA
AC Voltage Strength	4kV, 50Hz, 1 minute
Anti-surge Voltage/Current	4kV, 1.2/50μs; 4kA, 8/20μs
Immunity to Short-circuit Current	30 I <sub>max</sub>
Immunity to Electrical Fast Transients/Bursts (EFTB)	4kV (IEC 61000-4-4)
Protection	IP 54 (Indoor)
Operating Temperature Range	-25°C ~ +55°C
Storage Temperature	-40°C ~ +70°C
Anti-tampering	Meter cover open, terminal cover open, current reversal, magnetic influence, neutral missing, bypass
Dimensions (L x W x H)	220mm * 130mm * 86mm
Weight	Approx. 1.25kg

## Connection



## Dimensions





# DDSY283U Single Phase Prepayment PLC Meter

**DDSY283U Single Phase Prepayment PLC Meter** uses IC card as the data communication media. In addition, it has PLC remote communication capability. The meter measures active energy. Meter data is displayed on a big LCD with high bright backlight so that the user can check meter data easily.



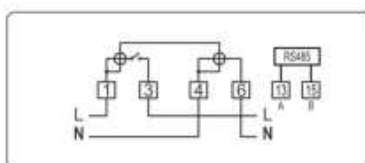


# DDSY283U Single Phase Prepayment PLC Meter

## Specification

Item	Parameter
Accuracy (kWh)	Class 1 (IEC62053-21)
Basic Current (Ib)	10A
Maximum Current (Imax)	60A
Minimum Current	0.05Ib
Starting Current	$\leq 0.004Ib$ (Direct Connection)
Rated Voltage (Un)	220V
Operating Voltage Range	0.8Un~1.2Un
Operating Frequency	50Hz or 60Hz
Communication Interface	Local: 1 contactless infrared interface Remote: 1 PLC
Communication Protocol	Local: IEC62056-21 Mode C Remote: HL PLC
Relay	1 Main contactor (80A)
RTC	$\leq 0.5s/day$ (at 23°C)
RTC Support	10 years life
Backup Battery	Built-in
Pulse Constant	1600 imp/kWh
Power Consumption	Current circuit $\leq 0.5VA$ Voltage circuit $\leq 1.8W/10VA$
AC Voltage Strength	4kV, 50Hz, 1 minute
Immunity to Electrical Fast Transients/Bursts (EFTB)	4kV (IEC 61000-4-4)
Operating Temperature Range	-25°C ~+70°C
Storage Temperature	-40°C ~+85°C
Anti-tampering	Meter cover open; terminal cover open; current reversal; current bypass
Dimensions (L x W x H)	202.7mm*113.4mm*73mm (with modem)
Weight	Approx. 0.8kg

## Connection



## Dimensions





## DTS541 (U)

# Three Phase Meter

**DTSD545 (U) Three Phase Meter** is an industrial meter. The meter measures and records active energy, reactive energy, maximum demand and real time values of the power grid with TOU features. Data and parameters are displayed on LCD and can be read out through optical port or RS485 port. The user's power consumption can be checked by analyzing historical data and load profile. The Event log of the meter helps determine the meter status as well as power grid conditions.



© 2015 by ULEE METERING LTD. All rights reserved. As standards, specifications and designs change from time to time.

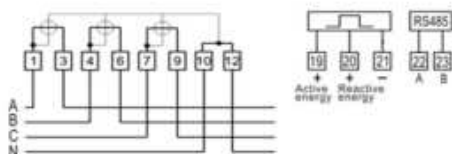
Please ask for confirmation of the information given in this publication.

# DTS541 (U) Three Phase Meter

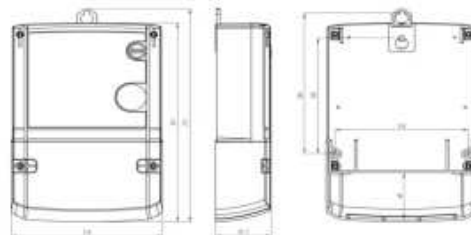
## Specification

Item	Sub-item	Parameter
Basic	Meter Type	3 Phase 4 Wire
	Meter Standard	IEC62052-11, IEC62053-21, IEC62053-23
	Active Accuracy	Class 1.0 (IEC62053-21)
	Reactive Accuracy	Class 1.0 (IEC62053-21)
	Rated Voltage (Un)	3x220/380V, 3x230/400V, 3x240/415V
	Operating Voltage Range	0.8Un~1.2Un
	Operating Frequency	50Hz or 60Hz
	Basic Current (Ib)	5A, 10A, 20A, 5A (In)
	Maximum Current (Imax)	60A, 100A (Direct Connection) 6A, 10A (CT)
	Starting Current	0.004Ib, 0.002In
	Pulse Constant	1000 imp/kWh, 1000 imp/kvarh (DC)
	Power Consumption	Current Circuit: $\leq 4VA$ (Ib=5A) Voltage Circuit: $\leq 2W/10VA$
	Operating Temperature	-25°C ~ +55°C
	Storage Temperature	-40°C ~ +70°C (Limit) -40°C ~ +85°C
Performance	AC Voltage of Insulation	4kV, 50Hz, 1min
	Impulse Voltage of Insulation	6kV
	Immunity to Fast Transient Burst	4kV
	Surge Immunity	4kV
	Immunity to Short-time Over-current	30 Imax
Communication	Local Comm. Port1	Optical Port
	Local Comm. Port2	RS 485
	Local Comm. Protocol	IEC62056-21 C
LED & LCD Display	LED	1 Active Pulse 1 Reactive Pulse
	LCD Display Digits (Integer + decimal)	Energy: default 6+2
TOU	TOU	-4 tariff -10 time interval -8 day profiles table -12 week profile table -12 seasons -special holidays & fixed holidays
	RTC	$\leq 0.5$ s/day (at 23°C)
	Battery Life	10years, at least 2 years in case of any power failure.
Load Profile	Load Profile	Support up to 30 days
Billing	Billing Data (Energy data)	Save 12 times billing data
	Billing Data (MD Data)	Save 12 times billing data
Event	Anti-tamper	Magnetic detection, meter cover opening, terminal cover opening
	Event Records	8 kinds of events
Mechanism	Terminal Box	B5 Standard
	Enclosure Protection	IP 54 (Indoor)
	Seal	2 Meter cover seals 2 Meter cover seal
	Meter Case material	Polycarbonate
	Dimensions (L x W x H)	273mm x 170mm x 62.5mm
	Weight	1.2kg

## Connection



## Dimensions





# DTSD545 (B)

## Three Phase Meter

**DTSD545 (B) Three Phase Meter** is an industrial meter. The meter measures and records active energy, reactive energy, active maximum demand and real time values of the power grid with TOU features. The battery is replaceable. Data and parameters are displayed on LCD and can be read out through optical port or RS485 port. The user's power consumption can be checked by analyzing historical data and load profile. Event log of the meter helps determine the meter status as well as power grid conditions.



© 2015 by ULEE METERING LTD. All rights reserved. As standards, specifications and designs change from time to time.

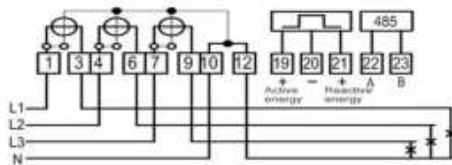
Please ask for confirmation of the information given in this publication.

# DTSD545 (B) Three Phase Meter

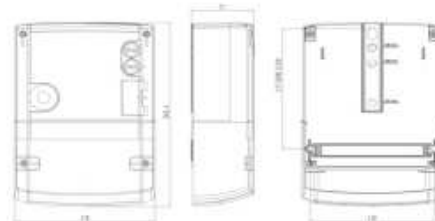
## Specification

Item	Sub-Item	Parameter
Basic	Meter Type	3 Phase 4 Wire
	Meter Standard	IEC62052-11, IEC62053-21, IEC62053-23
	Active Accuracy	Class 1.0 (IEC62053-21)
	Reactive Accuracy	Class 2.0 (IEC62053-23)
	Rated Voltage (Un)	3x220/380V, 3x230/400V, 3x240/415V
	Operating Voltage Range	0.8Un~1.2Un
	Operating Frequency	50Hz or 60Hz
	Basic Current (Ib)	5A, 10A, 15A, 20A
	Maximum Current (Imax)	60A, 80A, 100A (Direct Connection)
	Starting Current	0.004Ib
	Pulse Constant	1000 imp/kWh, 1000 imp/kVarh (Imax = 60A)
	Power Consumption	Current Circuit: $\leq 0.5VA$ (Ib=5A) Voltage circuit: $\leq 1.5W/5VA$
	Operating Temperature	-25°C ~ +55°C    -40°C ~ +70°C (Limit)
	Storage Temperature	-40°C ~ +85°C
Performance	AC Voltage of Insulation	4kV, 50Hz, 1 minute
	Impulse Voltage of Insulation	6kV
	Immunity to Fast Transient Burst	4kV
	Surge Immunity	4kV
	Immunity to Short-time Over-current	30 Imax
Communication	Local Comm. Port1	Optical Port
	Local Comm. Port2	RS 485
	Local Comm. Protocol	IEC62056-21 C
LED & LCD Display	LED	1 Active Pulse 1 Reactive Pulse
	LCD Display Digits (Integer + decimal)	Energy; default 6+2
TOU	TOU	-4 tariff -10time interval -8 day profiles table -8 week profile table -6 seasons -Support static and lunar holidays
	RTC	$\leq 0.5$ s/day (at 23°C)
	DST	Configurable & Auto-switch
	Battery Life	10 years (Replaceable)
Load Profile	Load Profile	Support up to 8 channels
Billing	Billing Data (Energy Data)	Save 12 times billing data
	Billing Data (MD Data)	Save 12 times billing data
Event	Anti-tamper	Magnetic detection, meter cover open, terminal cover open, Current reverse.
	Event Records	Last 300 records
	Terminal Box	BS Standard
Mechanism	Enclosure Protection	IP 54 (Indoor)
	Seal	3 Meter cover seals 2 Meter cover seal
	Meter Case material	Polycarbonate
	Dimensions (L x W x H)	240mm x 170mm x 75mm
	Weight	1.27kg

## Connection



## Dimensions





# DTSD545 (P)

## Three Phase Meter

**DTSD545 (P) Three Phase Meter** is an industrial meter. The meter measures and records active energy, reactive energy, active maximum demand and real time values of the power grid with TOU features. Data and parameters are displayed on LCD and can be read out through optical port or RS485 port. The user's power consumption can be checked by analyzing historical data and load profile. Event log of the meter helps determine the meter status as well as power grid conditions.

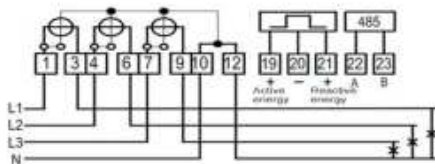


# DTSD545 (P) Three Phase Meter

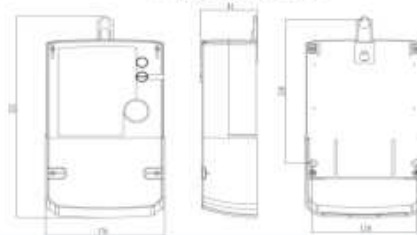
## Specification

Item	Sub-item	Parameter	
Basic	Meter Type	3 Phase 4 Wire	
	Meter Standard	IEC62052-11, IEC62053-21, IEC62053-23	
	Active Accuracy	Class 1.0 (IEC62053-21)	
	Reactive Accuracy	Class 2.0 (IEC62053-23)	
	Rated Voltage (Un)	3x220/380V, 3x230/400V, 3x240/415V	
	Operating Voltage Range	0.8Un~1.2Un	
	Operating Frequency	50Hz or 60Hz	
	Basic Current (Ib)	5A, 10A, 15A, 20A	
	Maximum Current (Imax)	60A, 80A, 100A (Direct Connection)	
	Starting Current	0.004Ib	
	Pulse Constant	1000 imp/kWh, 1000 imp/kVarh (Imax = 60A)	
	Power Consumption	Current Circuit: $\leq 0.5VA$ (Ib=5A) Voltage Circuit: $\leq 1W/10VA$	
	Operating Temperature	-40°C ~ +70°C	
	Storage Temperature	-40°C ~ +85°C	
Performance	AC Voltage of Insulation	4kV, 50Hz, 1 minute	
	Impulse Voltage of Insulation	6kV	
	Immunity to Fast Transient Burst	4kV	
	Surge Immunity	4kV	
	Immunity to Short-time Over-current	30 Imax	
	Immunity of Magnetic Field	Anti strong magnetic field	
Communication	Local Comm. Port1	Optical Port	
	Local Comm. Port2	RS 485	
	Local Comm. Protocol	IEC62056-21 C	
LED & LCD Display	LED	1 Active Pulse 1 Reactive pulse	
	LCD Display Digits (integer + decimal)	Energy: default 6+2      History Energy: 7+1	
TOU	TOU	-4 tariff -10time interval -8 day profiles table -8 week profile table -6 seasons -Support static and lunar holidays	
		RTC	$\leq 0.5$ s/day (at 23°C)
		DST	Support
		Battery Life	10 years
		Load Profile	Load Profile
Billing	Billing Data (Energy Data)	Save 12 times billing data	
	Billing Data (MD Data)	Save 12 times billing data	
Event	Anti-tamper	Magnetic detection, meter cover open, terminal cover open, Current reverse.	
	Event Records	Last 200 records	
	Terminal Box	DIN Standard	
Mechanism	Enclosure Protection	IP 54 (Indoor)	
	Seal	3 Meter cover seals 1 Meter cover seal	
	Meter Case material	Polycarbonate	
	Dimensions (L x W x H)	323mm x 170mm x 81mm	
	Weight	2kg	

### Connection



### Dimensions





# DTSD545

## Three Phase AMM Meter

**DTSD545 Three Phase AMM Meter** is developed based on international advanced embedded hardware and software platform. It is a new generation of high precision AMM meter using modern microelectronic technology, PRIME/G3 PLC technology and smart grid technology. With the features of power data metering, multi-communication interfaces, tariff control, load profile and remote control, the meter is the best choice for all types of users of energy metering and power management.

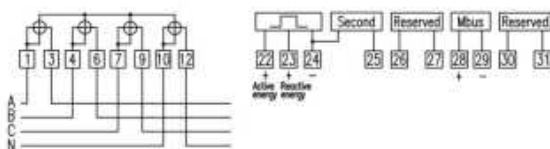


# DTSD545 Three Phase AMM Meter

## Specification

Item	Parameter
Accuracy (kWh)	3P4W CT Type : Class 0.5S (IEC62053-22) 3P4W CT Type : Class 1 (IEC62053-21)
Measuring Current (A)	3P4W CT Type: 5(10)A 3P4W CT Type: 10(100)A
Starting Current	0.001Ib (3P4W CT Type) 0.003Ib (3P4W CT Type)
Rated Voltage (Un)	3x230/400V
Operating Voltage Range	0.8Un~1.2Un
Operating Frequency	50Hz
Local Comm. Port1	1 Optical Port (IEC62056-21), max 9600bps IEC62056-21 E mode
Local Comm. Port2	1 RS485 Port, 9600bps HDLC DLMS/Cosem
Remote Comm. Port3	1 GPRS Module (optional), 1 PLC Module (optional) DLMS TCP/IP
TOU (Optional)	Tariff control available, up to 4 tariffs
Load profile (Optional)	Minutes/Hourly Load Profile
RTC	≤0.5s/day (at 23°C)
RTC Support	10 years life
Backup Battery	Replaceable
Pulse Constant	3P4W CT Type: 10000imp/kWh, 10000 imp/kvarh 3P4W DT Type: 1000imp/kWh, 1000 imp/kvarh
Power Consumption	Current circuit ≤0.5VA Voltage circuit ≤2W/10VA
AC Voltage Strength	4kV, 50Hz, 1 minute
Anti-surge Voltage/Current	4kV, 1.2/50μs 2kA, 8/20μs
Immunity to Short-circuit Current	3P4W CT: 20I <sub>max</sub> , 0.5S 3P4W DT: 30I <sub>max</sub> , one half-cycle
Immunity to Electrical Fast Transients/Bursts (EFTB)	4kV (IEC61000-4-4)
Immunity to Magnetic Field	Immune to strong magnetic disturbance; magnetic disturbance detection and warning
Protection	IP 54
Operating Temperature	-25°C ~ +60°C
Storage Temperature	-40°C ~ +75°C
Anti-tampering	Meter cover open, terminal cover open, magnetic field influence, reverse polarity
Dimensions (L x W x H)	290mm*170mm*105mm
Dimensions (L x W x H)	DT Type: Approx. 2kg CT Type: Approx1.5kg

## Connection



## Dimensions





# DTSD546

## Three Phase AMM Meter

**DTSD546 Three Phase AMM Meter** is designed based on Holley-patented technology. It is a new generation of high precision meter for smart grid application by using modular design and data encryption security algorithm. With the features of energy metering, data storage and processing, real time monitoring, automatic control, information exchange and remote firmware upgrade, the meter is an ideal product satisfying modern smart grid requirements.



© 2015 by ULEE METERING LTD. All rights reserved. As standards, specifications and designs change from time to time.

Please ask for confirmation of the information given in this publication.

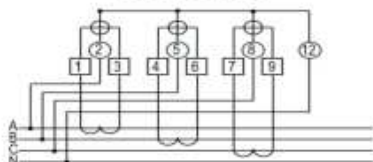


# DTSD546 Three Phase AMM Meter

## Specification

Item		Parameter
Accuracy (kWh)		Class 0.25 (IEC62053-22)
Accuracy (kWh)		Class 2.0 (IEC62053-23)
Measuring Current (A)		5(6)A
Minimum Current		0.002In (Indirect Type )
Starting Current		0.001In (Indirect Type )
Rated Voltage (Un)		3P3W: 3 x 110 V 3P4W: 3 x 220/380 V
Operating Voltage Range		3P3W: 3x100 ~ 3x415 V 3P4W: 3x 58/100 ~3 x 240/415 V
Operating Frequency		50Hz
Communication Interface	Local Port 1	1 Optical port (IEC62056-21) IEC62056-21 E mode
	Local Port 2	1 RS485, DLMS HDLC
	Remote Port 3	Rj45: GPRS modem connection DLMS TCP/IP
TOU (Optional)		Tariff control available, up to 3 tariffs
Load Profile (Optional)		Minutes/Hourly/Daily/Monthly Load Profile
RTC		≤0.5s/day (at 23°C)
RTC Support		10 years life
Backup Battery		Replaceable
Pulse Constant		10000 imp/kwh, 10000 imp/kvarh
Power Consumption		Current circuit ≤0.5VA Voltage circuit ≤1.8W/10VA
AC Voltage Strength		4kV, 50Hz, 1 minute
Anti-surge Voltage Current		4kV, 1.2/50μs 4kA, 8/20μs
Immunity to short-circuit current		30 I <sub>max</sub>
Immunity to Electrical Fast Transients/Bursts (EFTB)		4kV
Immunity to Magnetic Field		Immune to strong magnetic disturbance; magnetic disturbance detection and warning
Protection		IP 51
Operating Temperature Range		-25°C ~+70°C
Storage Temperature		-40°C ~+85°C
Anti-tampering		Meter cover open, terminal cover open, Current reversal
Dimensions (L x W x H)		298.7mm*170mm*78.8mm (with modem)
Weight		Approx.1.6kg

## Connection



## Dimensions





# DTSY541U Three Phase Prepayment Meter

**DTSY541U Three Phase Prepayment Meter** uses IC card as the data communication media. The meter supports TOU function. Meter data is displayed on a big LCD with high bright backlight so that the user can check meter data easily.

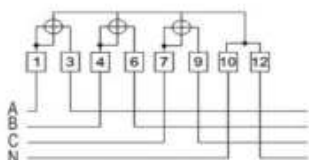


# DTSY541U Three Phase Prepayment Meter

## Specification

Item	Parameter
Accuracy (kWh)	Class B (EN50470-3) Class 1 (IEC62053-21)
Measuring Current (A)	5(80)A,10(100)A
Minimum Current	0.05Ib
Starting Current	0.004Ib (Direct Connection)
Rated Voltage (Un)	3x220/380~240/415V
Operating Voltage Range	0.7Un~1.2Un
Operating Frequency	50Hz
Communication Interface	1 contactless infrared interface 1 circuit RS485
Communication Protocol	IEC62056-21
Relay	3 main contactors (120A)
Load Profile (Optional)	Minutes/Hourly Load Profile
RTC	≤0.5s/day (at 23°C)
RTC Support	10 years operation life, can operate for at least 2 years in case of any power failure
Backup Battery	Non-replaceable
Pulse Constant	1000 imp/kWh
Power Consumption	Current circuit ≤0.5VA Voltage circuit ≤2W/10VA
AC Voltage Strength	4kV, 50Hz, 1 minute
Anti-surge Voltage Current	4kV,1.2/50μs 4kA, 8/20μs
Immunity to short-circuit current	30 I <sub>max</sub>
Immunity to Electrical Fast Transients/Bursts (EFTB)	4kV (IEC 61000-4-4)
Immunity to Magnetic Field	Immune to strong magnetic disturbance; magnetic disturbance detection and warning
Protection	IP 51
Operating Temperature Range	-25°C ~+70°C
Storage Temperature	-40°C ~+85°C
Anti-tampering	Meter cover open, terminal cover open, Current

## Connection



## Dimensions

