



T7

20-300W

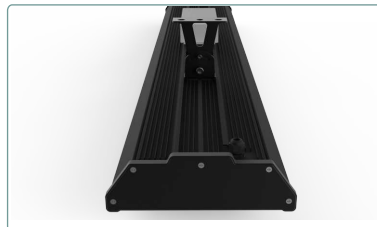
LED Tunnel Light

Features



1 Integral Design

Integrated linear surface lighting design, ultra-thin die-casting end cover, support linear non-spaced lighting.



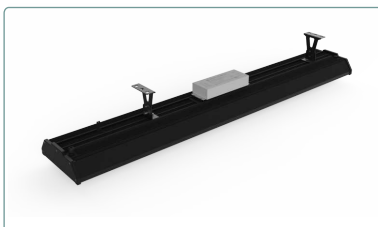
2 Excellent Cooling Design

All aluminum design, integrated downwind fins for naturally heat dissipation, reduce light decay and ensure long lifespan.



3 Soft Light Output

Adopt optical grade textured glass panel and high reflective rate reflector, highly efficient and soft light output, significantly reduce glare.



4 Chute Design

Chute design mount bracket, can move left and right flexibly to fit the installation position, $\pm 45^\circ$ angle adjustable, easy installation and maintenance.



5 High Quality Material

Only adopt international top brand LED chip and driver to guarantee best quality.



6 IP66 Rated

Waterproof structure and standard respirator to balance internal and external air pressure and prevent fogging, \geq IP66.

PRODUCT PARAMETER

Power Consumption	20W	30W	45W	50W	60W	80W	100W
Instant Output Lumen	2400±5% lm	3000±5% lm	5400±5% lm	6000±5% lm	7200±5% lm	9600±5% lm	12000±5% lm
LED Quantity	128 pcs	128 pcs	128 pcs	128 pcs	128 pcs	192 pcs	192 pcs
Typical System Efficiency	≥120 lm/W						

Power Consumption	120W	150W	180W	200W	240W	270W	300W
Instant Output Lumen	14400±5% lm	18000±5% lm	21600±5% lm	24000±5% lm	28800±5% lm	32400±5% lm	36000±5% lm
LED Quantity	256 pcs	256 pcs	384 pcs	384 pcs	448 pcs	448 pcs	576 pcs
Typical System Efficiency	≥120 lm/W						

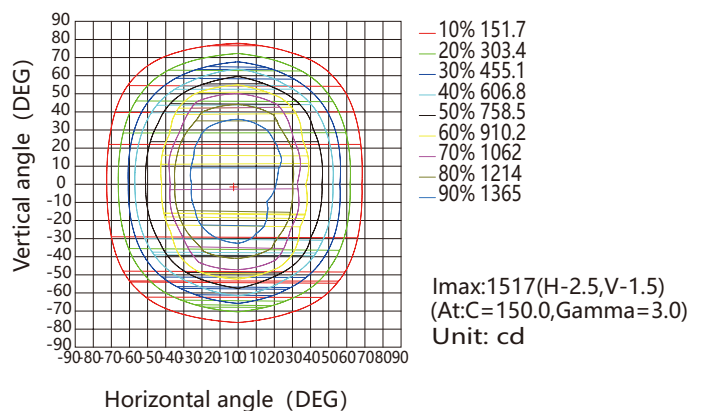
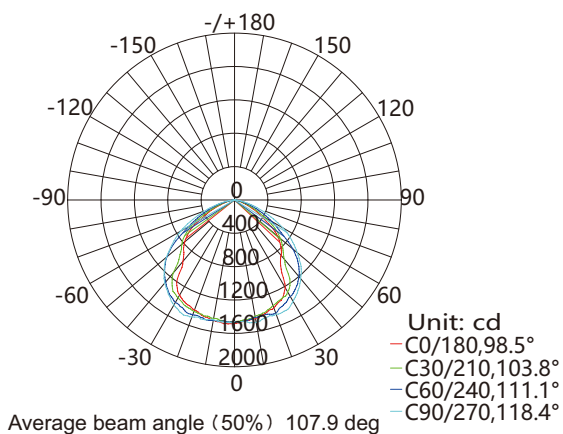
Color	Warm White	Neutral White	Cool White	Cool White
Color Temperature	3000±300K	4000±300K	5000±300K	5700±300K
Typical CRI	≥70			
Beam Angle	110°/100°			
Material	Alloy Aluminum, Stainless Steel, Optical PC			
Lifespan	>100,000h			
Operating Temperature	-30°C~+60°C			
Storage Temperature	-30°C~+50°C			
Frequency	47~63HZ			
Operating Voltage	100~240V AC			

LED SPECIFICATION

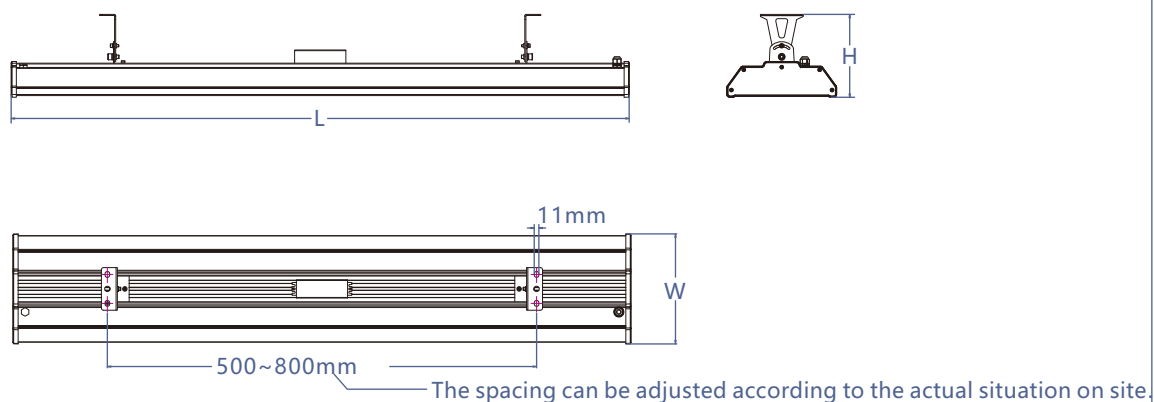
LED Brand	Lumileds
LED packaging size	3.0X3.0X0.52 mm
LED beam angle	120°

Driving Power	0.2~0.6W
CRI	≥70
LED light efficiency	140-150lm/W

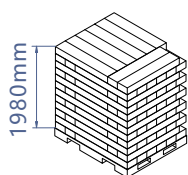
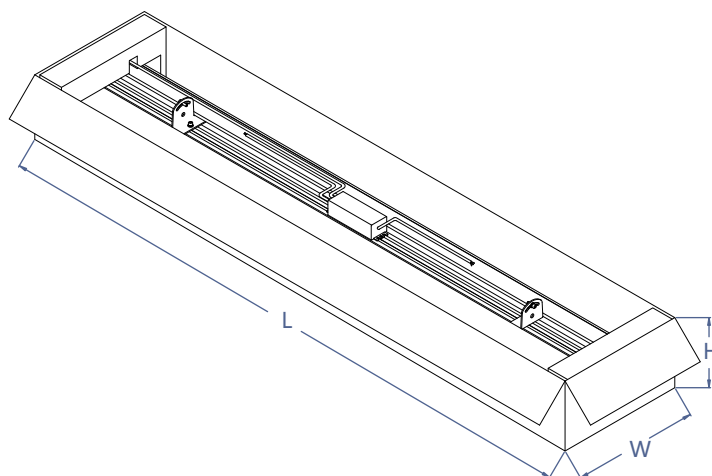
LIGHT DISTRIBUTION CURVE



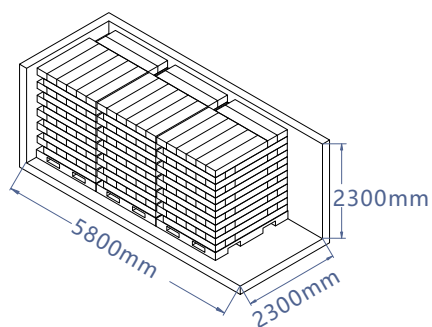
PRODUCT DIMENSION



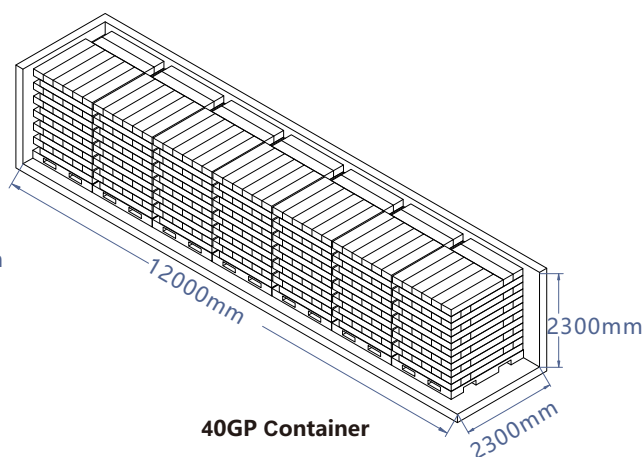
PACKING



Pallet



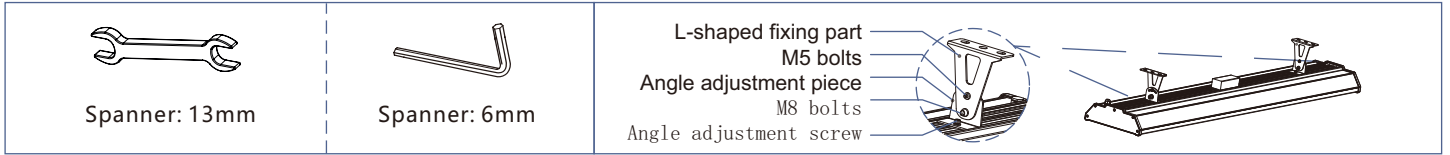
20GP Container



40GP Container

Power	Product Dimension (mm)	EPA	Weight	Packing (mm)	Pallet Dimension (mm)	20GP Container Loading Quantity	40GP Container Loading Quantity
20~300W	L1450 x W258 x H195	0.375m ²	6.7kg	L1465 x W275 x H165	L2035 x W1670 96 PCS	288 PCS	672 PCS

INSTALLATION GUIDE



Installation on both sides of the tunnel wal:

1. According to the hole size in the product dimension drawing, drill 4 mounting holes on the tunnel wall and install the lamps with 4 M10 expansion bolts.
2. Confirm the installation direction of the lamp (the luminous surface of the lamp points to the middle of the road), fix the lamp on the 2 expansion bolts according to the direction after confirmation. Take out the positioning screw, fix the positioning screw to the hole corresponding to the angle, and tighten the external hexagon angle adjustment screw.
3. Correctly connect the power cable from the lamp to the AC cable (see wiring diagram for details).
4. According to the actual lighting requirements on site, you may loosen the angle adjustment screw on the angle adjustment piece, adjust the lamp to the appropriate angle (around 15° from the horizontal level of the tunnel, depending on the arc of the tunnel), and then lock the bolt tightly.

Inspection:

1. Firmness, neatness, direction, angle.
2. The wire is not exposed and the wire sheath is not damaged.
3. Power-on check (air switch and other devices need to be turned to the ON position). For the lamps with control system and so on, it is necessary to coordinate the whole. For the lamps with wrong installation, it is necessary to disconnect the power and start the installation again.

