



A102 10-70W Solar LED Street Light

- Charging efficiency of MPPT higher 20% than traditional charging technology.
- Integrated optical light distribution enhances light utilization exactly.
- Independent aluminium alloy heat sink, temperature rise <20°C.
- Easily loading by 4 times, and looks more stylish, more concise.
- Best LiFePO₄ battery, monocrystal panel from Sunpower.
- Offer 5 years warranty, light efficiency >110lm/w.
- Time control and motion sensor combining, curve dimming, improving energy utilization.

CE  IP66 EN62471

Power	10W	15W	20W	30W	40W	50W	60W	70W
Luminous flux	1100±5% lm	1650±5% lm	2200±5% lm	3300±5% lm	4400±5% lm	5500±5% lm	6600±5% lm	7700±5% lm
Photovoltaic Panel	17W Sunpower	20W Sunpower	33W Sunpower	47W Sunpower	60W Sunpower	80W Sunpower	94W Sunpower	107W Sunpower
Accumulator (lithium iron phosphate)	26650*8PCS 12.8V 6AH	26650*12PCS 12.8V 9AH	26650*20PCS 12.8V 15AH	26650*28PCS 12.8V 21AH	26650*36PCS 12.8V 27AH	26650*48PCS 12.8V 36AH	26650*56PCS 12.8V 42AH	26650*64PCS 12.8V 48AH
Charging time	> 6H							
Discharge time	3 days, 12 hours per day lighting (standard intelligent mode, less than 200 times action per day averagely)							
Pole Height	4-6m	4-6m	4-6m	4-6m	4-6m	4-6m	4-8m	4-8m
Control	time control + motion sensor							

Color	Warm White (WW)	Neutral White (NW)	Cold White (CW)
Color Temperature	3000±300K	4000±300K	5700±300K
Typical CRI	≥70		
Beam Angle	155°/60°		
Operating Temperature	-10°C ~ +45°C		
Storage Temperature	-30°C ~ +60°C		
Lifespan	> 100,000 hours		



G6 50-250W LED Street Light

- Full aluminum design, chute connection, shockproof and corrosion resistant.
- Self-cleaning design, few light failure, long lifespan.
- Design drawer-shaped cover for driver, easy installation, convenient maintenance.
- Imported optical PC lens, accurate secondary light distribution, excellent anti-aging performance.
- Heat insulation module, independent waterproof.
- Ultra-thin design, thickness of heat sink <60mm (standard height of hoop), lower wind drag.

CE  IK10 IP67

Power Consumption	50W	100W	150W	200W	250W
Instant Output Lumen(CREE)	6250 lm	12500±5% lm	18750±5% lm	25000±5% lm	31250±5% lm
LED Quantity(CREE)	42PCS	84PCS	126PCS	168PCS	168PCS
Instant Output Lumen(Lumileds)	6250 lm	12500±5% lm	18750±5% lm	25000±5% lm	31250±5% lm
LED Quantity(Lumileds)	60PCS	120PCS	180PCS	240PCS	240PCS
Typical System Efficiency	≥125lm/W				

Color	Warm White (WW)	Neutral White (NW)	Cool White (CW)
Color Temperature	3000±300K	4000±300K	5700±300K
Typical CRI	≥70		
Beam Angle	150°/70° (Lumileds) , 150°/60° (CREE)		
Input Voltage	100 ~ 240V AC		
Frequency	50 ~ 60Hz		
Operating Temperature	-30°C ~ +50°C		
Storage Temperature	-30°C ~ +60°C		
Material	Alloy Aluminum, Optical PC		
Lifespan	> 100,000 hours		



G5 30-80W LED Street Light

- Die casting Aluminum housing, equipped with gradienter. Support (48mm-60 mm) lamp arm.
- Opening housing without tool, independent waterproof in the cavity of power supply.
- Optical lens and glass design to realize accurate light distribution and fireproofing, delay the ageing of lens to maintenance luminous flux.
- Support 90° installation. 5° interval adjust freely (Horizontal: -15° to 10°, Vertical: -5° to 15°).
- Build-in respirator to prevent fogging inside the lamp.
- Support standard photocell sensor installation, direction of sensor 90° adjustable.



LM79 IK08 IP66

Power Consumption	30W	40W	50W	60W	70W	80W
Instant Output Lumen(CREE)	3300±5% lm	4400±5% lm	5500±5% lm	6600±5% lm	7700±5% lm	8800±5% lm
LED Quantity(CREE)	36PCS	36PCS	72PCS	72PCS	72PCS	72PCS
Instant Output Lumen(Lumileds)	3300±5% lm	4400±5% lm	5500±5% lm	6600±5% lm	7700±5% lm	8800±5% lm
LED Quantity(Lumileds)	40PCS	40PCS	80PCS	80PCS	80PCS	80PCS
Typical System Efficiency	≥110 lm/W					

Color	Warm White (WW)	Neutral White (NW)	Cool White (CW)
Color Temperature	3000±300K	4000±300K	5700±300K
Typical CRI	≥70		
Beam Angle	150° / 70° (Lumileds) , 150°/50° (CREE)		
Input Voltage	100 ~ 240V AC		
Frequency	47 ~ 63Hz		
Operating Temperature	-30°C ~ +45 °C		
Storage Temperature	-30°C ~ + 60 °C		
Material	Alloy Aluminum, Optical PC, Tempered Glass		
Lifespan	> 100,000 hours		



G5S 90-160W LED Street Light

- Die casting Aluminum housing, equipped with gradienter. Support (48mm-60 mm) lamp arm.
- Opening housing without tool, independent waterproof in the cavity of power supply.
- Optical lens and glass design to realize accurate light distribution and fireproofing, delay the ageing of lens to maintenance luminous flux.
- Support 90° installation. 5° interval adjust freely (Horizontal: -15° to 10°, Vertical: -5° to 15°).
- Waterproof rating IP66. IK08. Build-in respirator to prevent fogging inside the lamp.
- Support standard photocell sensor installation, direction of sensor 90° adjustable.



IK08 IP66

Power Consumption	100W	120W	150W
Instant Output Lumen(CREE)	11000±5% lm	13200±5% lm	16500±5% lm
LED Quantity(CREE)	96PCS	96PCS	128PCS
Instant Output Lumen(Lumileds)	11000±5% lm	13200±5% lm	17600±5% lm
LED Quantity(Lumileds)	126PCS	126PCS	168PCS
Typical System Efficiency	≥110 lm/W		

Color	Warm White (WW)	Neutral White (NW)	Cool White (CW)
Color Temperature	3000±300K	4000±300K	5700±300K
Typical CRI	≥70		
Beam Angle	155° / 90° (Lumileds) , 153°/84° (CREE)		
Input Voltage	100 ~ 240V AC		
Frequency	47 ~ 63Hz		
Operating Temperature	-30°C ~ +45 °C		
Storage Temperature	-30°C ~ + 60 °C		
Material	Alloy Aluminum, Optical PC, Tempered Glass		
Lifespan	> 100,000 hours		



G4s 30-105W LED Street Light

- New pocket size design, just little bigger than man's leather shoes (30W), lower price.
- Light weight, faster heat dissipation, corrosion resistant, suitable for harsh environment.
- New mounting design, support vertical or horizontal pole and on the wall, easy to use.
- New lens design specially for branch road or areas, also perfectly match with solar panel.
- Anti-UV PC lens, protecting from sun burn, keeping the original brightness for years.

CE NOM-ANCE IP66

Power Consumption	30W	45W	60W	75W	90W	105W
Instant Output Lumen(CREE)	3600±5% lm	5400±5% lm	7200±5% lm	9000±5% lm	10800±5% lm	12600±5% lm
LED Quantity(CREE)	24 pcs	24 pcs	48 pcs	48 pcs	72 pcs	72 pcs
Instant Output Lumen(Lumileds)	3600±5% lm	5400±5% lm	7200±5% lm	9000±5% lm	10800±5% lm	12600±5% lm
LED Quantity(Lumileds)	32 pcs	40 pcs	64 pcs	80 pcs	96 pcs	120 pcs
Typical System Efficiency	≥120 lm/W					

Color	Warm White (WW)	Neutral White (NW)	Cool White (CW)
Color Temperature	3000 ± 300K	4000 ± 300K	5700 ± 300K
Typical CRI	≥70		
Beam Angle	155°/75° (CREE) , 155°/60° (Lumileds)		
Input Voltage	100 ~ 240V AC		
Frequency	47 ~ 63Hz		
Operating Temperature	-30°C ~ +45°C		
Storage Temperature	-30°C ~ + 60°C		
Material	Alloy Aluminum, Optical PC		
Lifespan	> 100,000 hours		



G3 30-300W LED Street Light

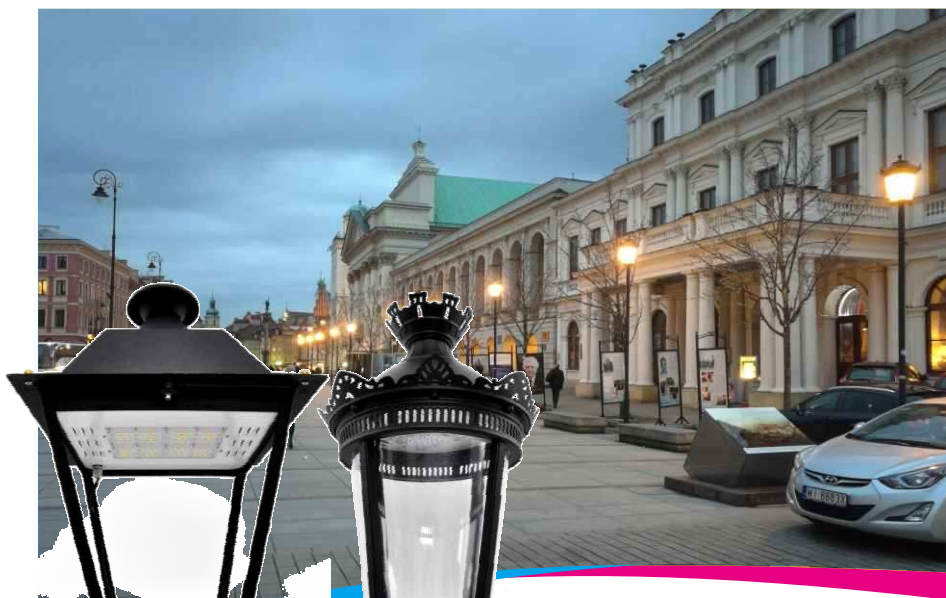
- Separated module design to ensure better heat dissipation and longer lifespan.
- Professional self-cleaning design to prevent sand, dust and leaves stacked.
- UV stabilized PC lens, keeping the original brightness for years.
- Timing, photocell, microwave sensor and solar system can be added.



NOM-ANCE RETILAP IK10 IP67

Power Consumption	30W	60W	120W	180W	240W	300W
Instant Output Lumen(CREE)	3600±5% lm	7200±5% lm	14400±5% lm	21600±5% lm	28800±5% lm	36000±5% lm
LED Quantity(CREE)	24 pcs	48 pcs	96 pcs	144 pcs	192 pcs	240 pcs
Instant Output Lumen(Lumileds)	3600±5% lm	7200±5% lm	14400±5% lm	21600±5% lm	28800±5% lm	36000±5% lm
LED Quantity(Lumileds)	32 pcs	64 pcs	128 pcs	192 pcs	256 pcs	320 pcs
Typical System Efficiency	≥120 lm/W					

Color	Warm White	Neutral White	Cool White
Color Temperature	3000 ± 300K	4000 ± 300K	5700 ± 300K
Typical CRI	≥70		
Beam Angle	145°/70° (CREE) , 145°/90° (CREE) , 155°/60° (Lumileds)		
Input Voltage	100 ~ 240V AC		
Frequency	47~63Hz		
Operating Temperature	-30°C ~ +55°C		
Storage Temperature	-30°C ~ + 60°C		
Material	Alloy Aluminum, Optical PC		
Lifespan	> 100,000 hours		



GD1 GD2 30-75W LED Garden Light

- The design style with some European art element to satisfy human visual.
- Anti-Glare, high transmitting, high light efficiency, low light failure, high energy saving, long lifespan, safe usage.
- 60° / 50°, 150°/75°, 85°/80°, three kind of beam angle of lens optional.
- With > 2.0 W/m k. high thermal conductivity PCB, to make temperature uniformity, conduction rapidly and secure long lifespan.
- New generation of light distribution design specially for garden light, high lux and color uniformity.

CE  CB LM79 IP66 IK10

Power Consumption	30W	45W	60W	75W
Instant Output Lumen	3300 lm±5%	4950 lm±5%	6600 lm±5%	8250 lm±5%
LED Qty	32 pcs	40 pcs	64 pcs	80 pcs
Typical System Efficiency	≥110 lm/W			

Color	Warm White	Neutral White	Cool White
Color Temperature	3000 ± 300K	4000 ± 300K	5700 ± 300K
Typical CRI	≥70		
Beam Angle	60° / 50°, 150°/75°, 85°/80°		
Input Voltage	100-240V AC		
Frequency	47 ~ 63Hz		
Operating Temperature	-30°C~+50°C		
Storage Temperature	-30°C~+60°C		
Material	PC, Aluminum Alloy		
Lifespan	> 100,000 hours		



T3 30-300W LED Tunnel Light

- Newest downwind and dustproof heat sink increases many times dissipation area.
- Separate porous module design improve heat dissipation ability by times, which achieve to be longer lifetime.
- Stress area of the lamp is not on screw thread.
- Improved U-shaped load-bearing structure. Adjustment accuracy ≤15°.
- Intelligent control system compatible.

CE NOM-ANCE  IP67

Power Consumption	30W	45W	60W	75W	90W	105W	120W
Instant Output Lumen(CREE)	3450±5% lm	5175±5% lm	6900±5% lm	8625±5% lm	10350±5% lm	12075±5% lm	13800±5% lm
LED Quantity(CREE)	24 pcs	24 pcs	48 pcs	48 pcs	72 pcs	72 pcs	96 pcs
Instant Output Lumen(Lumileds)	3300±5% lm	4950±5% lm	6600±5% lm	8250±5% lm	9900±5% lm	11550±5% lm	13200±5% lm
LED Quantity(Lumileds)	32 pcs	40 pcs	64 pcs	80 pcs	96 pcs	120 pcs	128 pcs
Typical System Efficiency	≥115 lm/W(CREE), ≥110 lm/W(Lumileds)						
Power Consumption	150W	180W	210W	240W	270W	300W	
Instant Output Lumen(CREE)	18000±5% lm	21600±5% lm	25200±5% lm	28800±5% lm	32400±5% lm	36000±5% lm	
LED Quantity(CREE)	120 pcs	144 pcs	168 pcs	192 pcs	216 pcs	240 pcs	
Instant Output Lumen(Lumileds)	17250±5% lm	20700±5% lm	24150±5% lm	27600±5% lm	31050±5% lm	34500±5% lm	
LED Quantity(Lumileds)	160 pcs	192 pcs	224 pcs	256 pcs	288 pcs	320 pcs	
Typical System Efficiency	≥120 lm/W(CREE), ≥115 lm/W(Lumileds)						

Color	Warm White (WW)	Neutral White (NW)	Cool White (CW)
Color Temperature	3000 ± 300K	4000 ± 300K	5700 ± 300K
Typical CRI	≥70		
Beam Angle	155°/75°(CREE), 155°/65°(Lumileds)		
Input Voltage	100 ~ 240V AC		
Frequency	47 ~ 63Hz		
Operating Temperature	-30 °C ~ +50 °C		
Storage Temperature	-30 °C ~ + 60 °C		
Material	PC, Aluminum Alloy		
Lifespan	> 100,000 hours		

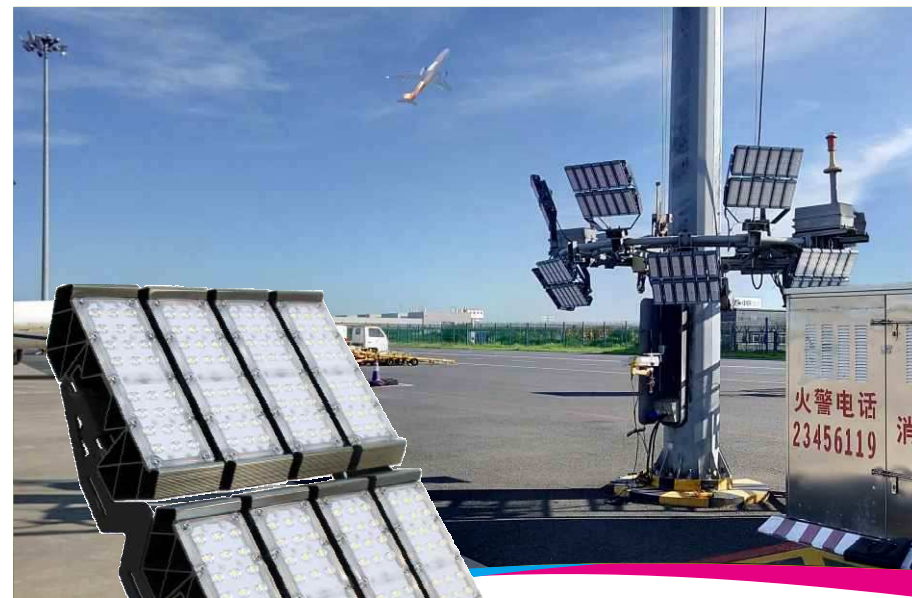


P4 240-960W LED High Mast

- Modular design, 240W each module integrated with driver, support 1-4 modules.
- Adopt integrated protection process combined die-casting and tempered glass, protecting from high density salt spray and other gas corrosion, delay ageing of lens to maintain luminous flux. Support optional lens hood design.
- Different types of lens for improving light utilization and reduce waste and pollution.
- Adjustable angle precisely, 10° interval adjustment, to realize accurate light distribution. Build-in respirator easily prevent water and fogging inside the lamp.
- Optional mounting brackets, available for different installation types and different places, achieving perfect replacement.

CE IP66 IK10

Power Consumption	240W	480W	720W	960W
Instant Output Lumen(CREE)	27600±5% lm	55200±5% lm	82800±5% lm	110400±5% lm
LED Quantity(CREE)	216 pcs	432 pcs	648 pcs	864 pcs
Typical System Efficiency	≥115 lm/W			
Color	Warm White (WW)	Neutral White (NW)	Cool White (CW)	
Color Temperature	3000 ± 300K	4000 ± 300K	5700 ± 300K	
Typical CRI	≥70			
Beam Angle	45°, 20°/10°			
Input Voltage	100 ~ 240V AC			
Frequency	47 ~ 63Hz			
Operating Temperature	-30 °C ~ +50 °C			
Storage Temperature	-30 °C ~ + 60 °C			
Material	Alloy Aluminum, Optical PC, Tempered Glass			
Lifespan	> 100,000 hours			



P3 90-480W LED High Mast

- Separate porous module design improve heat dissipation ability by times, which achieve to be longer lifetime.
- Lens designed for high mast lighting and stadium lighting of 15-50 meters.
- UV stabilized PC lens, protecting from sun burn, keeping the original brightness for years.
- Easy maintenance, to replace the power by plugable connector quickly.

CE NOM-ANCE IP66

Power Consumption	90W	120W	150W	180W	240W
Instant Output Lumen	10800±5% lm	14400±5% lm	18000±5% lm	21600±5% lm	28800±5% lm
LED Quantity	72 pcs	96 pcs	120 pcs	144 pcs	192 pcs
Typical System Efficiency	≥120 lm/W				
Power Consumption	300W	360W	420W	480W	
Instant Output Lumen	36000±5% lm	43200±5% lm	50400±5% lm	57600±5% lm	
LED Quantity	320 pcs	384 pcs	448 pcs	512 pcs	
Typical System Efficiency	≥120 lm/W				

Color	Warm White (WW)	Neutral White (NW)	Cool White (CW)
Color Temperature	3000 ± 300K	4000 ± 300K	5700 ± 300K
Typical CRI	≥70		
Beam Angle	60°/50°, 20°/11°		
Input Voltage	100 ~ 240V AC		
Frequency	47 ~ 63Hz		
Operating Temperature	-30 °C ~ +50 °C		
Storage Temperature	-30 °C ~ + 60 °C		
Material	PC, Aluminum Alloy		
Lifespan	> 100,000 hours		



16 80-200W LED High Bay

- The lamp adopts the fin cooling design with better heat dissipation, small volume, light weight, low transport costs.
- MEAN WELL driver and Inventronics driver are available which ensure the PF up to 0.98, THD <20%.
- 60° and 120° beam angle are suitable for different environments.
- Reflector are available to prevent glare.

NOM-ANCE

CE IP65

Power Consumption	80W	100W	120W	150W	180W	200W
Instant Output Lumen(60°)	8800 lm±5%	11000 lm±5%	13200 lm±5%	16500 lm±5%	19800 lm±5%	22000 lm±5%
Instant Output Lumen(120°)	9600 lm±5%	12000 lm±5%	14400 lm±5%	18000 lm±5%	21600 lm±5%	22000 lm±5%
LED Quantity	154 pcs	154 pcs	245 pcs	245 pcs	360 pcs	360 pcs
Typical System Efficiency			≥110lm/W (60°)		≥120lm/W (120°)	

Color	Warm White	Neutral White	Cool White
Color Temperature	3000 ± 300K	4000 ± 300K	5700 ± 300K
Typical CRI	≥70		
Beam Angle	60°, 120°		
Input Voltage	100-240V AC		
Frequency	47 ~ 63 Hz		
Operating Temperature	-30°C~+40°C		
Storage Temperature	-30°C~+60°C		
Material	PC, Aluminum Alloy		
Lifespan	> 100,000 hours		



Smart Street Light



Smart lighting

Maximizing light utilization
Self-cleaning design
Single lamp control
Failure feedback



Video monitoring

Security and protection monitoring
Vehicle monitoring



Sensor

Temperature and humidity sensor
PM2.5 sensor
Water level sensor
Wind speed and direction sensor



Information releasing

Emergency notice
Releasing public information
Publicity and promotion



Light pole appearance

Customization
Four direction extension for fitting
Support light pole appearance
Customization



Urgent call

Emergency call
Alarm



Charging pole

Charging electric car



Wireless Net

Public WIFI
AP promotion

Model	Z1-A	Z1-B	Z1-C	Z1-D	Z1-E	Z1-F
Dimmable Street Light	•	•	•	•	•	•
HD Camera	•	•	•	•	•	•
WIFI	•	•	•	•	•	•
Alarm Apparatus				•		•
Wind Speed					•	•
Wind Direction					•	•
Temperature					•	•
Water Level						•
Pm2.5						•
Charging Pile			•	•	•	•
Led Display		•		•	•	•
Landscape Lamp					•	•